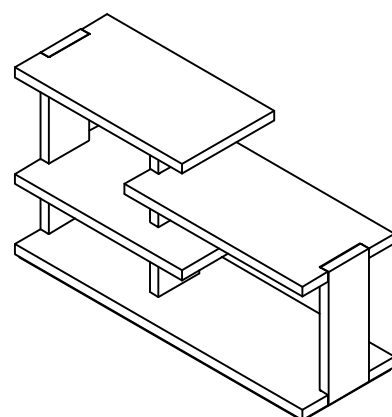


Warning :

- Be sure to check all packing material carefully for small parts, which may have come loose inside the carton during shipment.
- To prevent possible scratches and damage, this furniture **MUST BE ASSEMBLED BY TWO PEOPLE** on a soft surface such as a blanket or carpet.

Important Use Information: We recommend using coasters, placemats and trivets when placing hot or cold containers on this item. It is also recommended to quickly cleanup any spills to minimize exposure to moisture. Doing so will prolong the life and look of the item for many years.



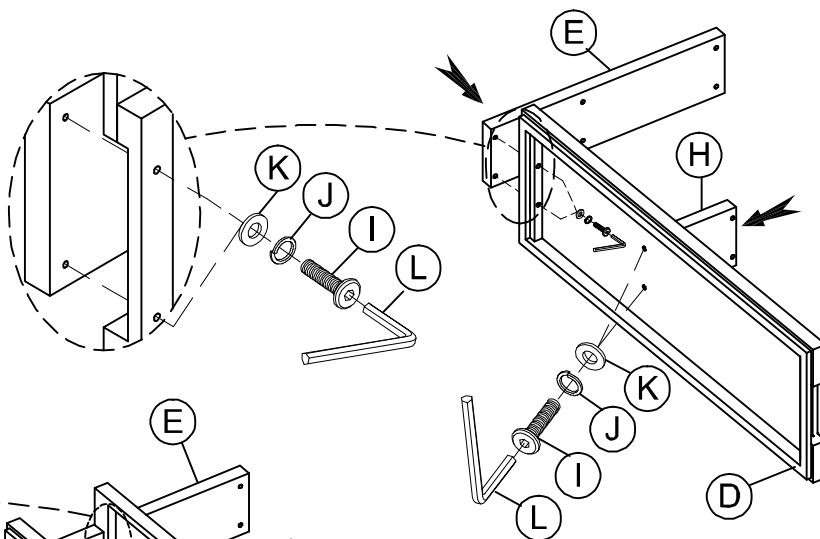
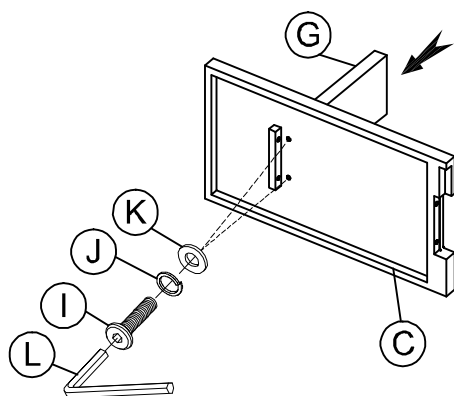
34115
Sofa Table

Components and Hardware List

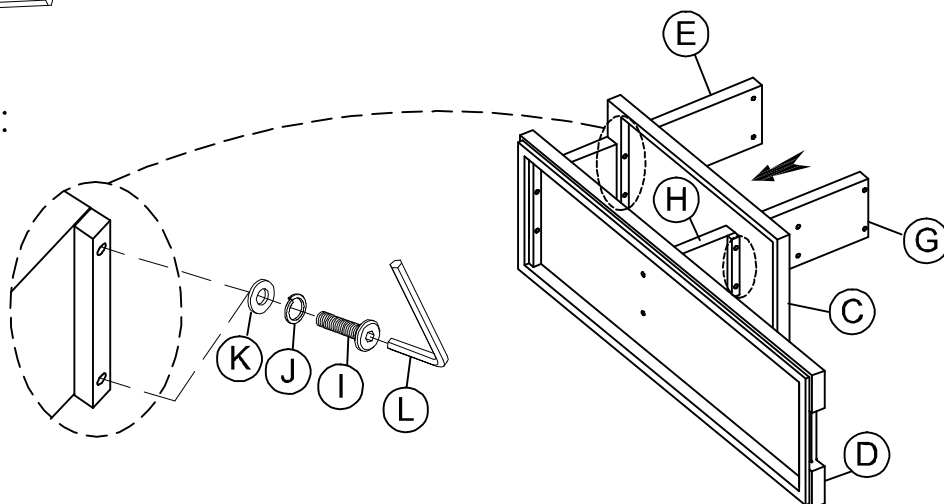
<p>Table Top</p> <p>(A) 1 pc.</p>	<p>Middle Shelf 1</p> <p>(B) 1 pc.</p>	<p>Middle Shelf 2</p> <p>(C) 1 pc.</p>	<p>Bottom Shelf</p> <p>(D) 1 pc.</p>	<p>Side Leg 1</p> <p>(E) 1 pc.</p>	<p>Side Leg 2</p> <p>(F) 1 pc.</p>	<p>Middle Leg 1</p> <p>(G) 1 pc.</p>
<p>Middle Leg 2</p> <p>(H) 1 pc.</p>	<p>Allen Head Bolt Ø5/16"-18 x 1-1/2"</p> <p>(I) 20 pcs.</p>	<p>Spring Washer Ø5/16"</p> <p>(J) 20 pcs.</p>	<p>Flat Washer Ø5/16"x 3/4"</p> <p>(K) 20 pcs.</p>	<p>Allen Key 4 mm</p> <p>(L) 1 pc.</p>	<p>Tipping Restraint Kit</p> <p>(M) 1 pc.</p>	

Step 1 : Two Bolts have to be tighten

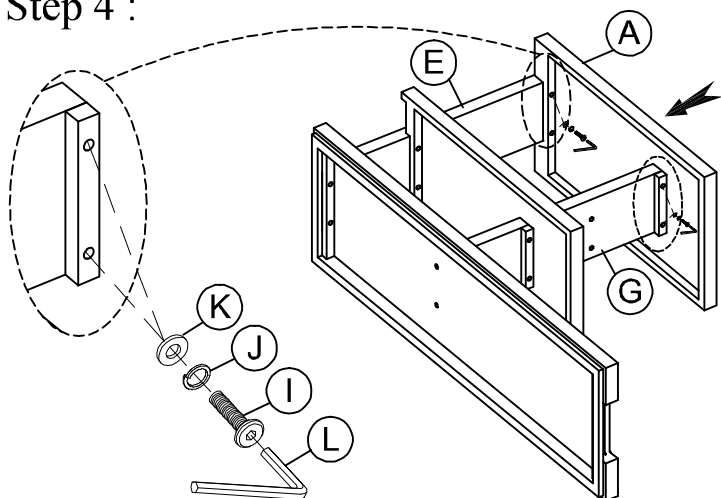
Step 2 : Do not fully tighten the bolts



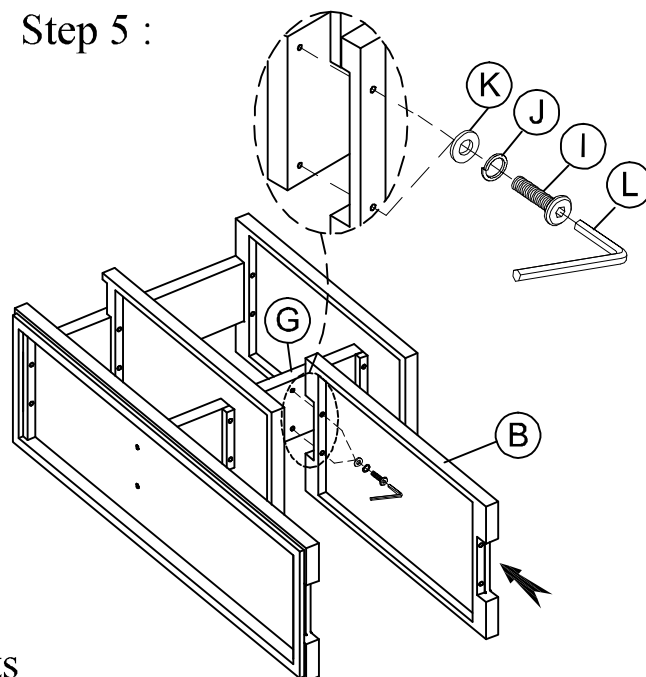
Step 3 :



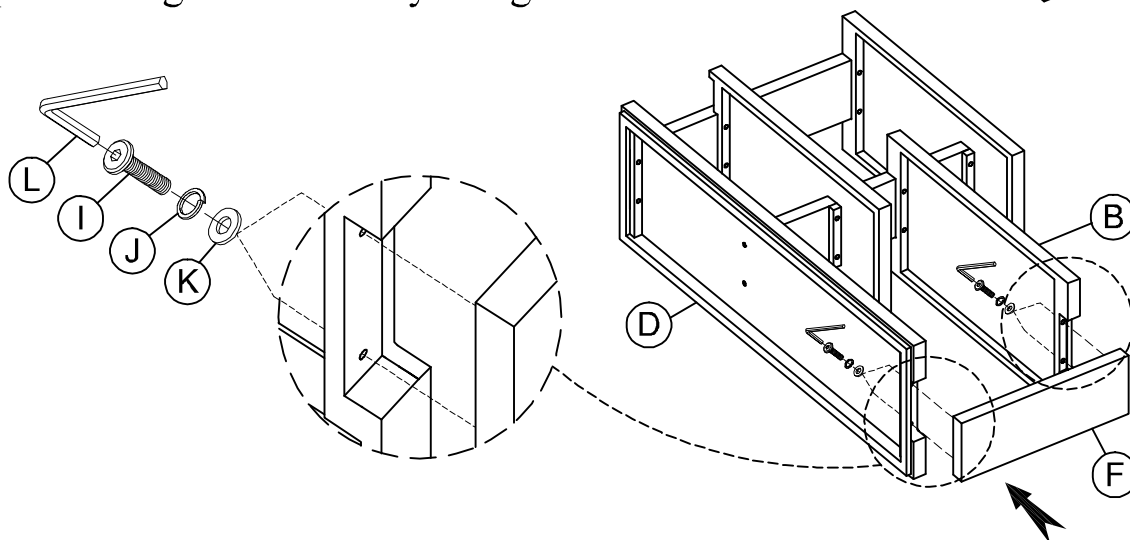
Step 4 :



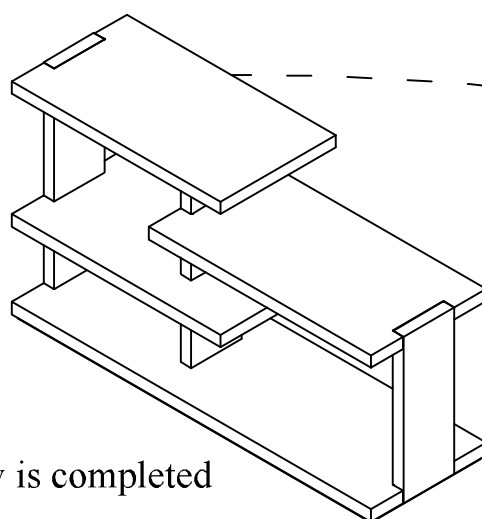
Step 5 :



Step 6 : Using the Allen key to tighten all bolts



Step 7 :



Assembly is completed



For product and personal safety, a Furniture Tipping Restraint kit has been included with this unit which can help to minimize the risk of the unit accidentally tipping forward, if used and properly installed per the manufacturer's instructions.